

1 Reason for update

This update has been made to allow the PMU's CAN address to be read and written from the configuration software. Prior to this update the CAN address had to be set using the CAN interface.

In addition, this update now allows the PMU's CAN Baudrate to be set to a range of common values.

2 Scope

2.1 Hardware

No changes. This firmware update is compatible with all hardware versions.

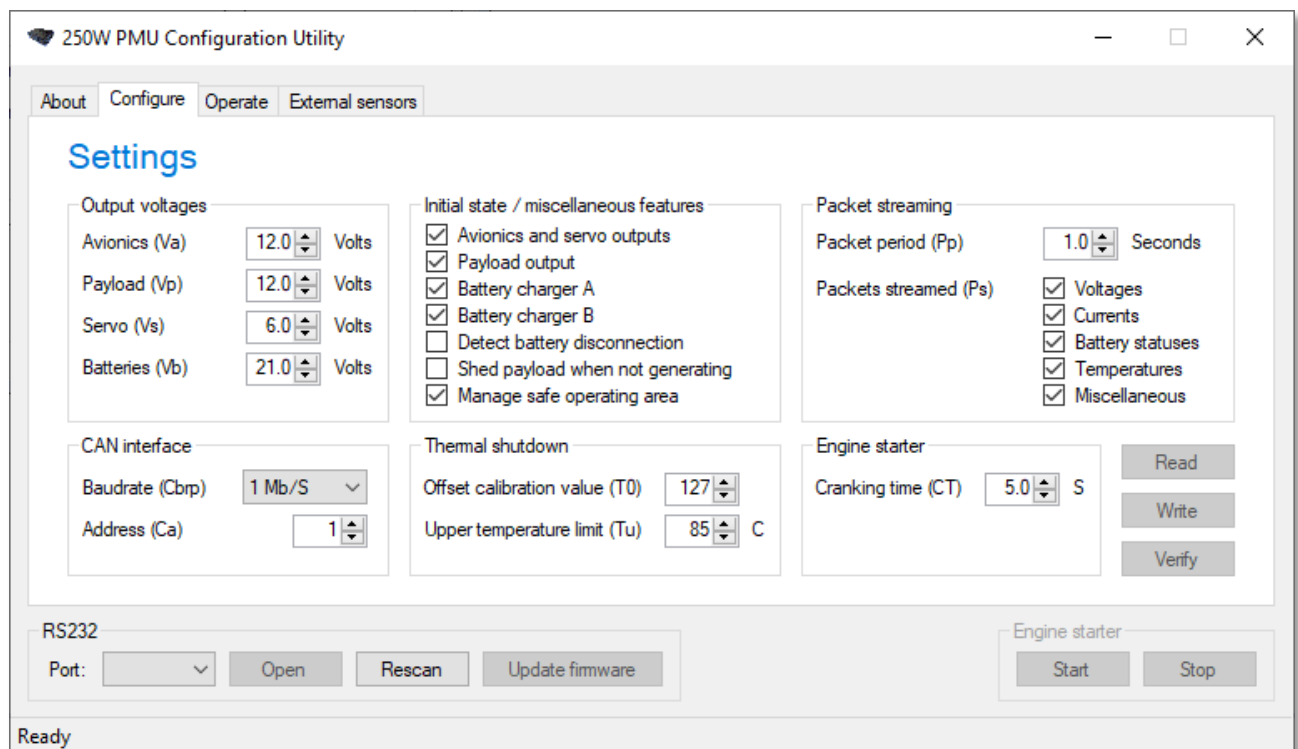
2.2 Embedded firmware

Firmware version 1.17 includes a two new RS232 commands, "Set CAN Baudrate" and "Set CAN address". The existing "Show" command has been expanded to report the values of the CAN Baudrate and the CAN address.

These changes are described in detail in the updated RS232 protocol document.

2.3 PC software

The configuration utility has been updated to version 1.0.0.7 and now allows the CAN Baudrate and CAN address to be set during configuration. The new items are located on the Configure tab as shown below:



3 Making the update

3.1 Download location

Download and save the new configuration utility (version 1.0.0.7) and firmware hex file (version 1.17). They are available from:

https://millswoodeng.com.au/resources.html#250w_pmu

3.2 Update process

Run the new configuration utility, press the "Update firmware" button, navigate to the new hex file and upgrade the PMU.

No existing settings are changed by the firmware update process.

Read the settings from the PMU. A warning message will appear – ignore it. Check the CAN interface settings – correct them if necessary – and then write all settings back to the PMU.

You're all done.

3.3 Compatibility

Using previous versions of the configuration utility with firmware version 1.17 is acceptable. Previous versions of the configuration utility will not access or modify the PMU's CAN settings in any way.

Using previous firmware versions with the new configuration software will work in a limited way, but is not recommended. A warning message will appear whenever a read or verify operation is attempted. A write operation will appear to have succeeded, but the CAN settings will not have been written.